



TRIGGERCAM

relive the moment | 2.1

BASIC START **GUIDE**



www.triggercam.com

TRIGGERCAM 2.1 BASIC START GUIDE

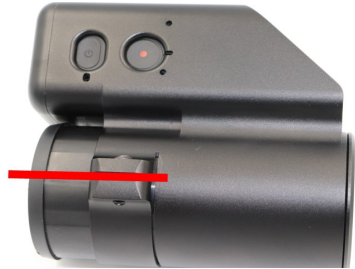
STEP 1:

Select & fit the required sleeve over your riflescope eyepiece. There should be a gap of approximately 2mm.



STEP 2:

Slide the correct sleeve into the **TRIGGERCAM** so that the sleeve slot is aligned with the slot of the **TRIGGERCAM**.



STEP 3:

Slide the **TRIGGERCAM** over the riflescope eyepiece and slightly tighten the mounting screw until the **TRIGGERCAM** is fixed to your riflescope.



STEP 4:

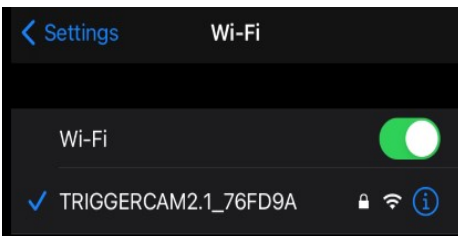
Switch on the **TRIGGERCAM**. Press and hold the power button for 2 seconds. Power button (red arrow) Record/Wi-Fi button (blue arrow). To activate the Wi-Fi. Press and hold the Record button until the orange light starts flashing.

**STEP 5:**

Connect to the **TRIGGERCAM** WI-FI network on your mobile device. The password for the camera is **1234567890**.

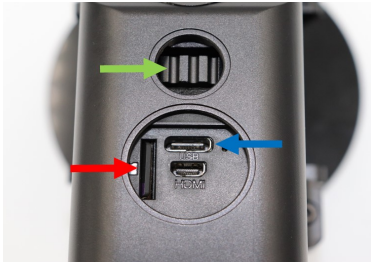
STEP 6:

Search for the **TRIGGERCAM** APP on Google play or the App store and download the app for your mobile device. Connect to your camera through the mobile app.



STEP 7:

Remove the focus cap with the **TRIGGERCAM** tool.

**STEP 8:** (continue)

Green arrow - Focus Ring

Blue arrow - Charge Port

Red arrow - SD Card

STEP 8:

After mounting, the next step is to focus the **TRIGGERCAM** for your specific riflescope. Ensure your riflescope is set on the magnification preferred, and aim on a target at the distance on which your rifle is zeroed e.g. 100 meters. Through using the live streaming function on the app, turn the focus until the image is in clear focus.

[TIP: Focus your TRIGGERCAM on your preferred magnification. Ensure your parallax setting is adjusted on the correct distance. Parallax will affect focus quality.



Image not in focus

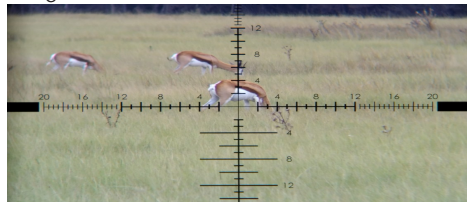


Image in focus

STEP 9:

Once your device is focussed, set the orientation of the camera so that the crosshairs are perfectly aligned. This can be done through live streaming function on your smart phone (SEE INSTRUCTIONS OF STREAMING BELOW).

STEP 10:

Your **TRIGGERCAM** is now ready!!!

IMPORTANT INFORMATION

- Recording can be done on either the **TRIGGERCAM** itself or via the **TRIGGERCAM** smart phone app. After the **TRIGGERCAM** is switched on, push the Record button. A single beep sound and flashing blue light will indicate the **TRIGGERCAM** is now recording. This recording is saved on the SD card that is inserted in the **TRIGGERCAM**. To stop the recording, push the Record button again until the beeper sounds three consecutive times and the flashing of the light stops.
- The red light located next to the USB charging port, indicates your **TRIGGERCAM** is charging. When the RED light switches off the unit is fully charged.



- The Blue led light indicates the state of the camera. Blue is video mode and green is photo mode. Pressing the POWER button, enables switching between photo and video modes. When you press the RECORD button in video mode, the blue light will start flashing. By pressing the RECORD button again, the recording will stop and the blue indicator light will also stop flashing.



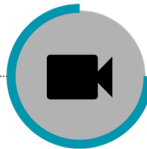
- Battery life of your **TRIGGERCAM**: 2 hours + recording time. Tip: to get longer battery operational time switch your **TRIGGERCAM** on & off between hunting sessions, activate sleep mode, activate auto on/off mode or connect a portable power bank to your unit.

QUICK FACTS

THE APP PROVIDES USERS WITH THE FOLLOWING INTERACTIVE FUNCTIONS:



Livestream TRIGGERCAM to your mobile device



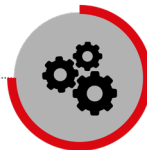
Control the recording of your TRIGGERCAM from your device



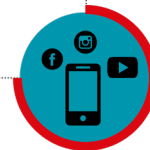
Record, save & view videos directly from your device



Access the gallery of all your video/photo content on your mobile device



Manage all the settings of your TRIGGERCAM



Share your video/photo content on Social media platforms & with friends

TRIGGERCAM	FUNCTIONS
Power button	Turn the TRIGGERCAM ON or OFF / Switch between video or photo mode.
Record / Wi-Fi button	Start & stop recording + activate/de-activate Wi-Fi
Blue LED indicator	Video Mode
Blue LED flashing	Video recording
Green LED indicator	Photo Mode
Orange LED indicator	Wi-Fi Switched ON
Red LED indicator	Wi-Fi OFF
USB Port	<ol style="list-style-type: none"> 1. Connect to computer for data transfer 2. Charge your TRIGGERCAM
Reset Button	Press & hold the Power & Recording buttons for 15 sec

DISCLAIMER

TRIGGERCAM trading under, EYECAM TECHNOLOGIES (PTY) LTD 2014/010477/07, and their shareholders, directors, officers, employees, sub-contractors or agents or affiliates in whole or in part, shall not be liable in any way whatsoever for any loss, injury or damage (including but not limited to consequential or special damages or loss of profits) of whatsoever nature, and whether or not caused by the negligence (gross or otherwise) of EYECAM TECHNOLOGIES (PTY) LTD and their shareholders, directors, officers, employees, sub-contractors or agents arising out of, incidental to, or in connection in any way with the use or installation of our products. EYECAM TECHNOLOGIES (PTY) LTD and their shareholders, directors, officers, employees, sub-contractors or agents are hereby released from any duty of care towards such customer, client or person. EYECAM TECHNOLOGIES (PTY) LTD shall have no liability of any nature whatsoever to any customer, client or person to whom purchased a product from us. The waiver referred to above will be binding on the heirs, dependents, assignees, executors, trustees or other legal representatives of the customer, client or person who are using, installing, testing or purchasing our products.

